

# It's all about location

## LIFE ON CAMPUS

Our beautiful campus, with a backdrop of green fields and rolling hills, is something we're proud to shout about. In the first year most of our students live on campus, where everything you need is on your doorstep. You'll find a range of facilities and services, including shops and a supermarket, as well as a dentist and health centre.

The buzzing social life and cosmopolitan atmosphere make it an excellent place to make friends and build networks that will stay with you long after you've finished your studies. There are plenty of places to meet up, including cafés, bars, and social spaces within our Schools of Studies, and the Students' Union organises entertainment and events on and off campus.

If you need a break from your studies, you can clear your head with a brisk walk over the Downs, or jump on your bike and get muddy along the many cycle paths.

## DISABLED ACCESS

We try to ensure that our campus is fully accessible. We invite you to visit us and to contact the Student Support Unit to discuss any access needs you may have.

**For more information, visit**

► [www.sussex.ac.uk/aboutus/campus/buildings](http://www.sussex.ac.uk/aboutus/campus/buildings)

## SUSSEX BY THE SEA

Brighton – buckets and spades, candy-floss, mods and rockers, vintage car runs and quirky shops – whatever image springs to mind when you think about this most vibrant of cities, one thing's for certain – there can be few better places to be a student.

Sometimes referred to as London by the sea, Brighton delivers on just about every front. Stroll along the prom and take in the sea air, relax in one of the many cafés and bars, check out the independent shops of the North Laine, or just soak up the culture.

We are consistently ranked as one of the top UK universities for nightlife by the *Which? University Guide* and, with some of the best club nights in the country, pubs, restaurants, cinemas, theatres, gigs, and the biggest arts festival in England, you'll always find something to keep you entertained.

Some call it bohemian, others outrageous, eccentric, cosmopolitan or just plain cool. Whatever you call it, it won't take long before you're calling it home.

09

minutes to Brighton

30

minutes to Gatwick airport

60

minutes to central London

90

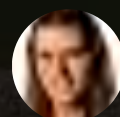
minutes to Heathrow airport



# BRIGHTON PIER

“

‘It’s really inspiring to study on a campus that’s so green and full of wildlife. We have the perfect learning environment while still being close to the beach and Brighton.’



**Clara Dean**  
BSc in Biology

# Get out more

We all know that a healthy social life is an important part of student life. That's certainly true at Sussex, and to make sure you balance the healthy with the social, the Students' Union and Sussexsport have plenty of societies and sports clubs to suit everyone.

## THE STUDENTS' UNION

'The Students' Union is an integral part of what it means to be a Sussex student. We're an independent, democratic organisation that provides a range of activities, events and advice.

'All students automatically become members of the Union and membership is free. I'm one of the six full-time officers who've been elected to spend a year working on students' behalf, making sure their voice is heard and that they have the best possible experience at the University.

'The Union supports over 180 clubs and societies, and over 30 sports teams, so there's something for everyone. There are academic societies, dance societies, an award-winning TV station, and even a ukulele society! And if your burning passion isn't represented, it's really easy to set up your own. Clubs and societies are a great way to meet people, have fun and campaign for the causes you care about.

'We run bars and shops on campus, which not only provide a place to unwind and get your essentials, but also employ over 200 students. As a student-led organisation, we give our members the flexibility to fit work around their academic commitments.

'We're really keen on keeping our students entertained and Freshers' Week is a big part of this. It's an exciting time, and the Union make sure it's always memorable. Last year we had Hodor, from Game of Thrones, DJ at the Freshers' Party.

'We also organise Black History month and One World Week to celebrate the cultural diversity of the student body at Sussex.

'Student representation is also an important part of what we do. Student Reps provide feedback on their course and play a key role in how courses are run at Sussex.'



**Abraham Baldry**  
University of Sussex  
Students' Union President

**For a full list of clubs and societies and to find out more about what we do, visit**  
► [www.sussexstudent.com](http://www.sussexstudent.com)





# Sussexsport

The University's Sussexsport works with the Students' Union to provide a packed sports programme for students and staff, with one of the largest group exercise and fitness programmes in the South East, including yoga, pilates, boxercise, trapeze, zumba, spinning and ballet. You can also get coaching in racket sports.

With our campus just a stone's throw from the Amex stadium, home to Brighton and Hove Albion FC, and the Sussex County Cricket Club ground in Hove, there are plenty of opportunities to get involved in sport.

We also offer sports bursaries to particularly talented students who represent their country. For more information, email [sussexsport@sussex.ac.uk](mailto:sussexsport@sussex.ac.uk)

## SPORTS FACILITIES INCLUDE:

- Two large multi-purpose sports halls
- Two fitness rooms with state-of-the-art cardiovascular and resistance equipment
- A strength and conditioning room and a free weights room
- A dance studio – martial arts dojo
- Four squash courts with glass backs
- A therapy room offering a sports injury clinic, treatments in massage, physiotherapy, chiropractic and beauty therapy services
- A floodlit artificial turf pitch for hockey and soccer
- Four grass soccer pitches
- A rugby and cricket pitch
- Six hard tennis courts

Find out more about sport at Sussex, visit

► [www.sussex.ac.uk/sport](http://www.sussex.ac.uk/sport)

To find out more about the specialist sports clubs organised by the Students' Union, visit

► [www.sussexstudent.com/sport](http://www.sussexstudent.com/sport)





# Support and advice

Sussex is a great place to be a student and so that you can make the most of your time here, we make sure that support and advice is available to help you stay happy and healthy.

We have a network of support and advisory services to help you, whether you need assistance with your studies, financial advice or have emotional or health concerns. Many students go through their studies without the need for our services, but it's good to know that if you do need a little extra support or just someone to talk to, we're here to help.

## STUDENT LIFE CENTRE

---

The Student Life Centre is the first place to go if you need information, advice or guidance. We aim to ensure that you have the best experience at Sussex you can by offering you support on a wide range of issues related to your welfare. We operate a drop-in desk, which is open all week, and offer appointments with Student Life Advisors to discuss things in private. We can help you with:

- concerns affecting study progress and well-being
- money matters including scholarships, bursaries, budgeting and hardship funds
- finding support to improve your academic performance
- understanding how the University works.

We can also help you by referring you to other campus support services, such as:

- the Student Support Unit, offering advice and support for students with disabilities, mental health difficulties and additional learning needs
- the University Counselling Service
- the on-campus NHS health centre, dentist and pharmacy.

**You can find out more about what we offer by visiting**

► [www.sussex.ac.uk/studentlifecentre](http://www.sussex.ac.uk/studentlifecentre)

## STUDENTS' UNION SUPPORT AND ADVOCACY TEAM

---

The Students' Union provides confidential advice on a range of issues, including loans, accommodation and benefits. The Union also run the Buddy Scheme to help you settle in to life at Sussex. The Scheme works by matching you with a current student volunteer so that they can meet up with you to share their experiences and help with any queries.

**Visit** ► [www.buddyscheme.com](http://www.buddyscheme.com)

**For more information on the support provided by the Students' Union, visit**  
► [www.sussexstudent.com/advice](http://www.sussexstudent.com/advice)

## CHILDCARE

---

For students with young children there is a nursery and pre-school on campus. Places are limited so we advise you to apply as early as possible.

**Visit** ► [www.sussex.ac.uk/childcare](http://www.sussex.ac.uk/childcare)

## OBSERVE YOUR FAITH

---

The Meeting House is an on-campus chaplaincy, with services spanning a range of denominations, and is shared by the Jewish community. The campus also has a Muslim Student Centre and prayer facility.

**For more information, visit,**  
► [www.sussex.ac.uk/equalities/religion](http://www.sussex.ac.uk/equalities/religion)

# Home from home

Leaving home is a big deal, exciting but also quite nerve-wracking; but when you realise that you'll be among thousands of other students in the same situation, all living together on campus, it won't take long before you settle in and start meeting the people who will be your friends for life.

## **LIVING ON-CAMPUS – OUR GUARANTEE**

Finding a comfortable, safe and convenient room is really important. At Sussex we work hard to make your time here feel like a real home from home. Our Housing Services team do all they can to support you and our residential advisors are always available to offer advice or help sort out any problems. You'll be living among more than 4,200 other students from over 100 countries, so you'll have no problem meeting people.

Most first years live on campus. We guarantee accommodation for new full-time undergraduates who firmly accept an academic offer and submit a completed online housing application by the 1 August deadline. Last year we set aside 250 rooms on-campus for students applying through Clearing and were able to house all who applied for housing via Clearing within 24 hours of receiving an online housing application.

**Full details about our housing guarantee, our latest availability for Clearing applicants, prices and residence descriptions are published in our housing guide at**

► [www.sussex.ac.uk/accommodation/residences](http://www.sussex.ac.uk/accommodation/residences)

We have a range of on-campus accommodation – from self-contained flats to single-person units, five-bedroom houses and single study bedrooms, as well as a limited number of small family flats. About 45 per cent of our accommodation has en-suite facilities and all on-campus rooms have wi-fi.

We are a self-catering university, and our accommodation has communal kitchens, with a limited number of studio units having self-contained kitchen areas. If you don't feel like cooking, there are plenty of places to eat on campus.

We also have a range of accommodation suitable for students with a disability. We recommend that you visit us to make sure it's suitable for you before you apply.

For information about rents, refer to page 154.

## **LIVING OFF-CAMPUS**

If you prefer city life, we also have accommodation in Brighton & Hove, with easy access to campus. Some of our houses and rooms are in residential areas, and some are in the middle of town with all the delights of the city at your fingertips.

You may prefer to look for rooms in the private sector, and our Housing Services team maintains an accommodation database of properties to rent locally.

**Find out more at**

► [www.sussex.ac.uk/accommodation/privatesector](http://www.sussex.ac.uk/accommodation/privatesector)

The Students' Union also runs Sussex Student Lettings, a campus-based agency that specialises in student housing in Brighton & Hove. They don't charge administration fees and can even help you find housemates to live with.

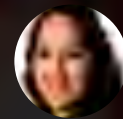
**For more information, visit**

► [www.sussexstudentlettings.com](http://www.sussexstudentlettings.com)



“

‘Living on campus means you can make friends even before classes begin. Our kitchen-living room area was spacious even for seven of us and felt homely, especially when we’d all sit around the table and eat.’



**Faye Tucknott**  
BA in English and Drama  
Lewes Court

