

# THE VOCAL BOOTHS: A QUICKSTART GUIDE



US

UNIVERSITY  
OF SUSSEX

# TABLE OF CONTENTS

INTRODUCTION TO THE SET UP IN THE VOCAL BOOTHS	3
QUICK START	
- STARTING UP	3
- SOUND SETTINGS - SYSTEM PREFERENCES	4
- SOUND SETTINGS - ADOBE AUDITION	4
- SETTING UP THE AUDIO INTERFACE	5
- PREPARING AUDITION TO RECORD	5
- SETTING INPUT LEVEL AND MONITORING LEVEL	6
- PLAYBACK	7
- SAVING YOUR SESSION	7
TROUBLESHOOTING	
- GETTING SOUND INTO AUDITION	8
APPENDIX	
- OVERVIEW OF THE FOCUSRITE SCARLETT 2i2	9

# GETTING STARTED IN THE VOCAL BOOTH USING ADOBE AUDITION

## THE SET UP IN THE BOOTHS

The microphone in the Vocal Booth is a Shure SM7B. This is connected to a Cloud Cloudlifter CL-1 microphone preamp, which in turn is connected to Input 1 of the Focusrite Scarlett 2i2 audio interface. The Cloudlifter boosts the signal by 25dB, increasing the output of the SM7B microphone which tends to be quite low. The Cloudlifter relies on phantom power (+48V) to operate.



You can connect a second microphone into Input 2 of the audio interface if you have a second person in the booth with you.

The interface is limited to two microphone inputs. If you want to record more than two people, please use a different space.



The headphones are connected to the audio interface. You can choose to control the headphones from the computer or from the interface.

Controlling the headphones from the audio interface with Direct Monitor enabled will reduce latency and make monitoring more comfortable.

## STARTING UP

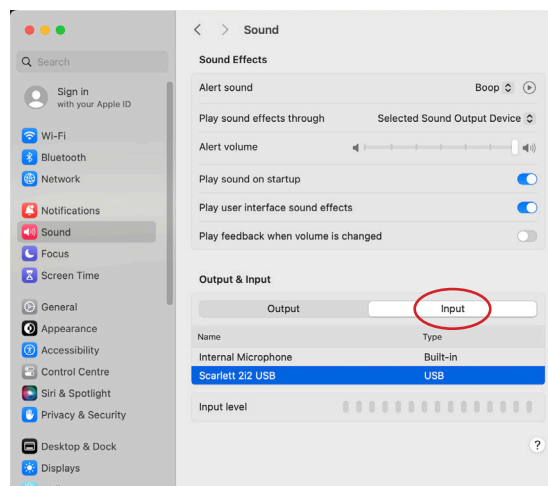
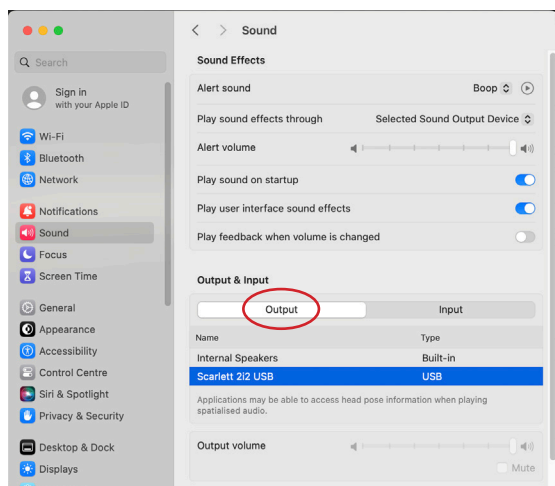
1. Log in to your account on the iMac
2. While that loads, check the USB LED is illuminated green on the audio interface. If this is not the case, follow the troubleshooting diagram on page 8)
3. Ensure the Input Gain and the Headphone Volume Control knobs on the Focusrite Scarlett 2i2 audio interface are set fully anti-clockwise (this is to avoid damaging your ears and the equipment)
4. Open Adobe Audition



# GETTING STARTED IN THE VOCAL BOOTH USING ADOBE AUDITION

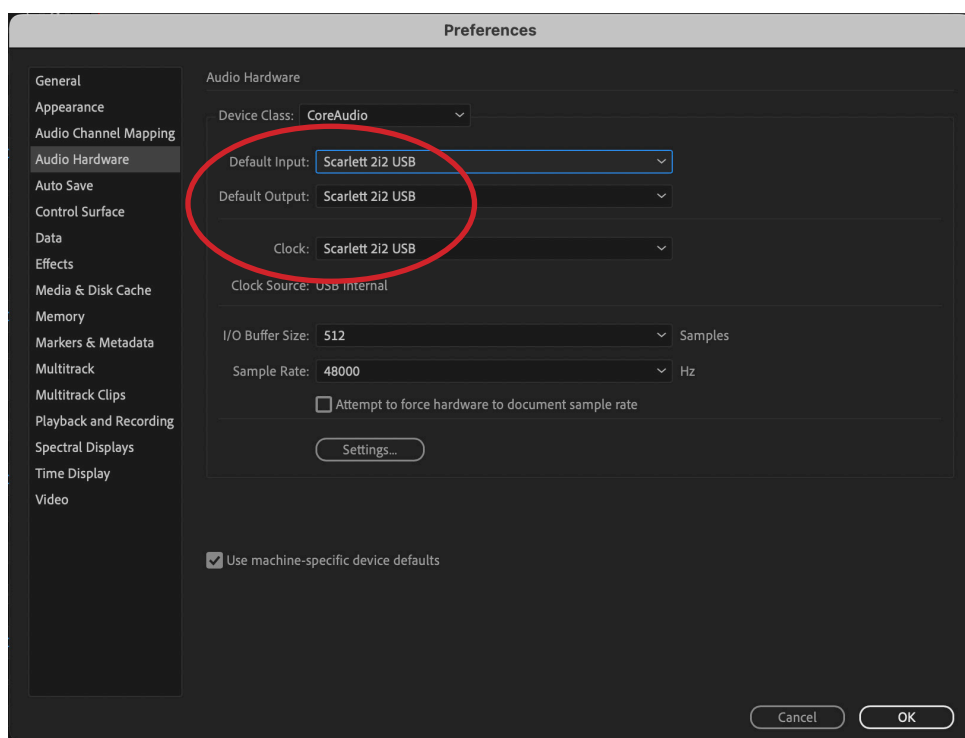
## SOUND SETTINGS - SYSTEM PREFERENCES

1. Open the Mac System Preferences
2. Click on the Sound menu in the side bar
3. Set the Input and the Output to “Scarlett 2i2 USB”



## SOUND SETTINGS - ADOBE AUDITION

1. With Adobe Audition open, click the Audition drop down menu > Preferences > Audio Hardware
2. Set the Input, the Output and Master Clock to “Scarlett 2i2 USB”

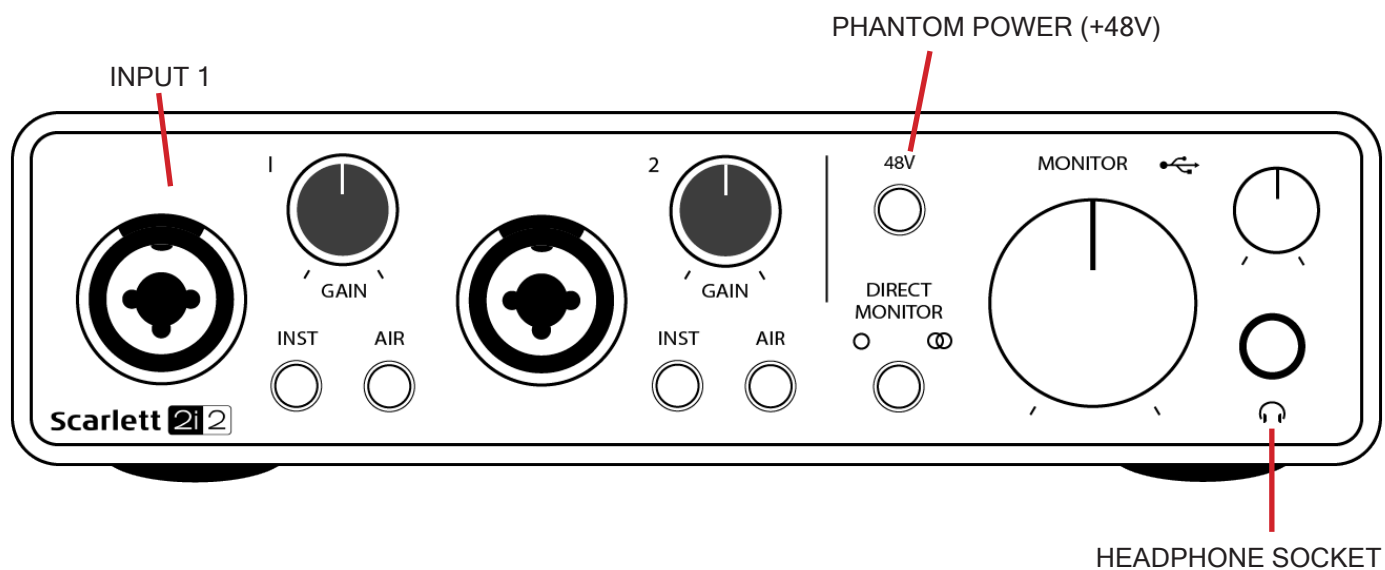


It's good practice to check your Audition hardware settings each time you log in on a university computer to ensure everything is set up the way it should be for your session.

# GETTING STARTED IN THE VOCAL BOOTH USING ADOBE AUDITION

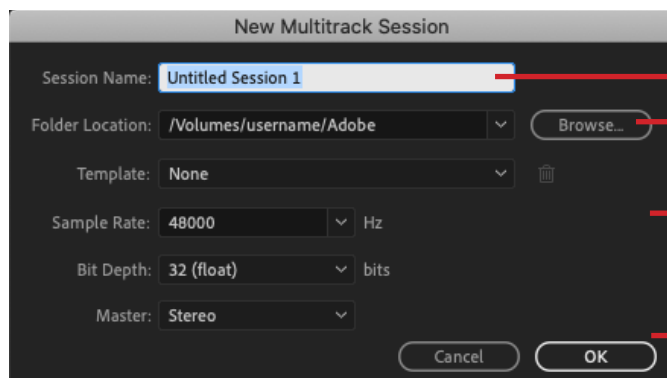
## SETTING UP THE AUDIO INTERFACE

1. Ensure the headphones are plugged the Headphone Socket on the Focusrite audio interface
2. Ensure the microphone is plugged into the Cloudlifter preamp via XLR and that this in turn is plugged into one of the inputs on the audio interface via XLR.
3. Turn on Phantom Power (+48V), the 48V symbol should be illuminated red.



## PREPARING AUDITION TO RECORD

1. Open a new Multitrack session in Audition (File > New > Multitrack Session...)



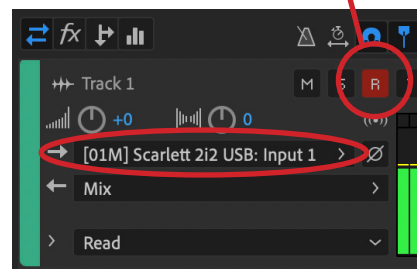
Name your Session

Choose a Location  
It's best to save it to a hard drive or to One Drive.

Set Settings

When this is red, the track is armed to record.

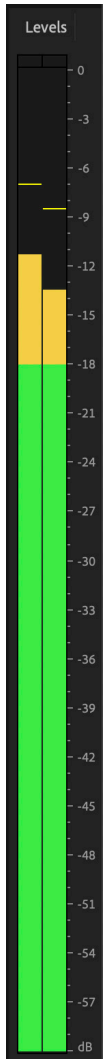
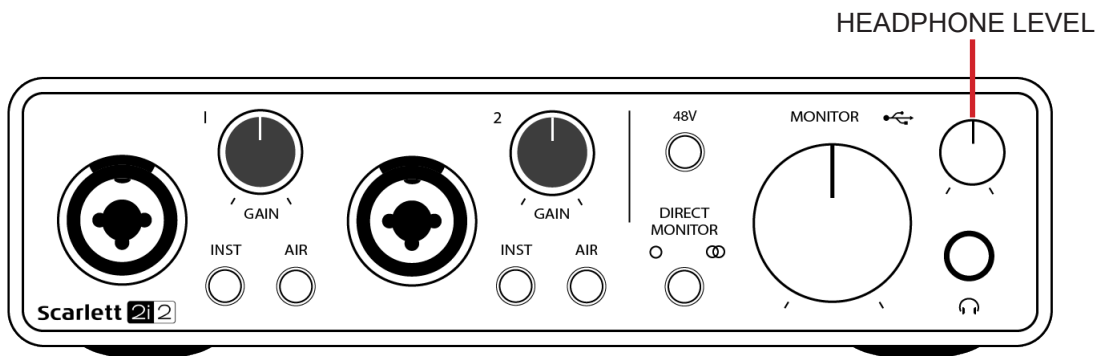
2. Set the input on Track 1 to Scarlett 2i2 USB: Input 1
3. Arm the Track to Record



# GETTING STARTED IN THE VOCAL BOOTH USING ADOBE AUDITION

## SETTING INPUT LEVEL AND MONITORING LEVEL

1. Set the input gain to an appropriate level by increasing the gain knob on the audio interface slowly as you (or someone else) speak(s) into the microphone. Use the Levels Meter in Audition to check your levels.
2. Set the monitor level to an appropriate listening level by using the Headphone Level knob on the audio interface.



You want to have a healthy audio signal coming in and then set the listening level accordingly - you can then monitor using your ears.

Allow for enough headroom in case of sudden peaks like bursts of laughter or the person speaking getting louder. You want to avoid letting your audio peak as it will cause distortion.

There are a variety of resources online that explain this in more depth.

The gain knobs have concentric tri-colour LED 'rings' to inform you of the signal level. concentric tri-colour LED 'rings' to confirm signal level: green indicates an input level of at least -24 dBFS (i.e., 'signal present'), the ring then turns amber at -6 dBFS to indicate that the signal is close to clipping, and finally to red at 0 dBFS (digital clipping).

## RECORDING

1. Press record in Audition (at the bottom of the Editor Panel)

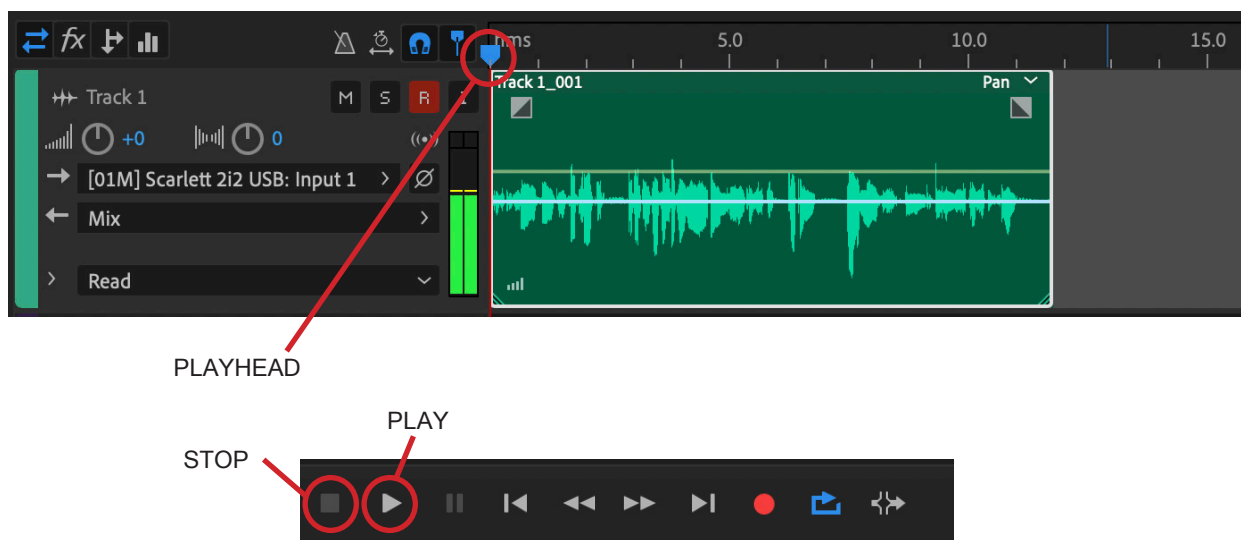


Once you are done speaking/recording, click the Stop button in Audition to stop recording.

# GETTING STARTED IN THE VOCAL BOOTH USING ADOBE AUDITION

## PLAYBACK

1. Move your playhead to the start of the recording
2. Press the spacebar to play or click the play button (at the bottom of the Editor Panel)
3. To stop playback press the spacebar or click the stop button



## SAVING YOUR SESSION

1. To save changes to the current session file, File > Save
2. To save changes under a new filename, File > Save As...
3. To save the session and all the audio files it contains, File > Save All
4. To combine session and source files for easy transfer to other computers or storage devices, File > Export... > Session... Ensure you select "Save copies of associated files" and in the Options... Ensure you select "Copy entire source files"

## FOR FURTHER HELP...

If you have any further questions or concerns regarding Adobe Audition or the use of the Vocal Booths, please contact a technician or have a look at the resources on the technical website and/ or the MAHTechServ YouTube channel.

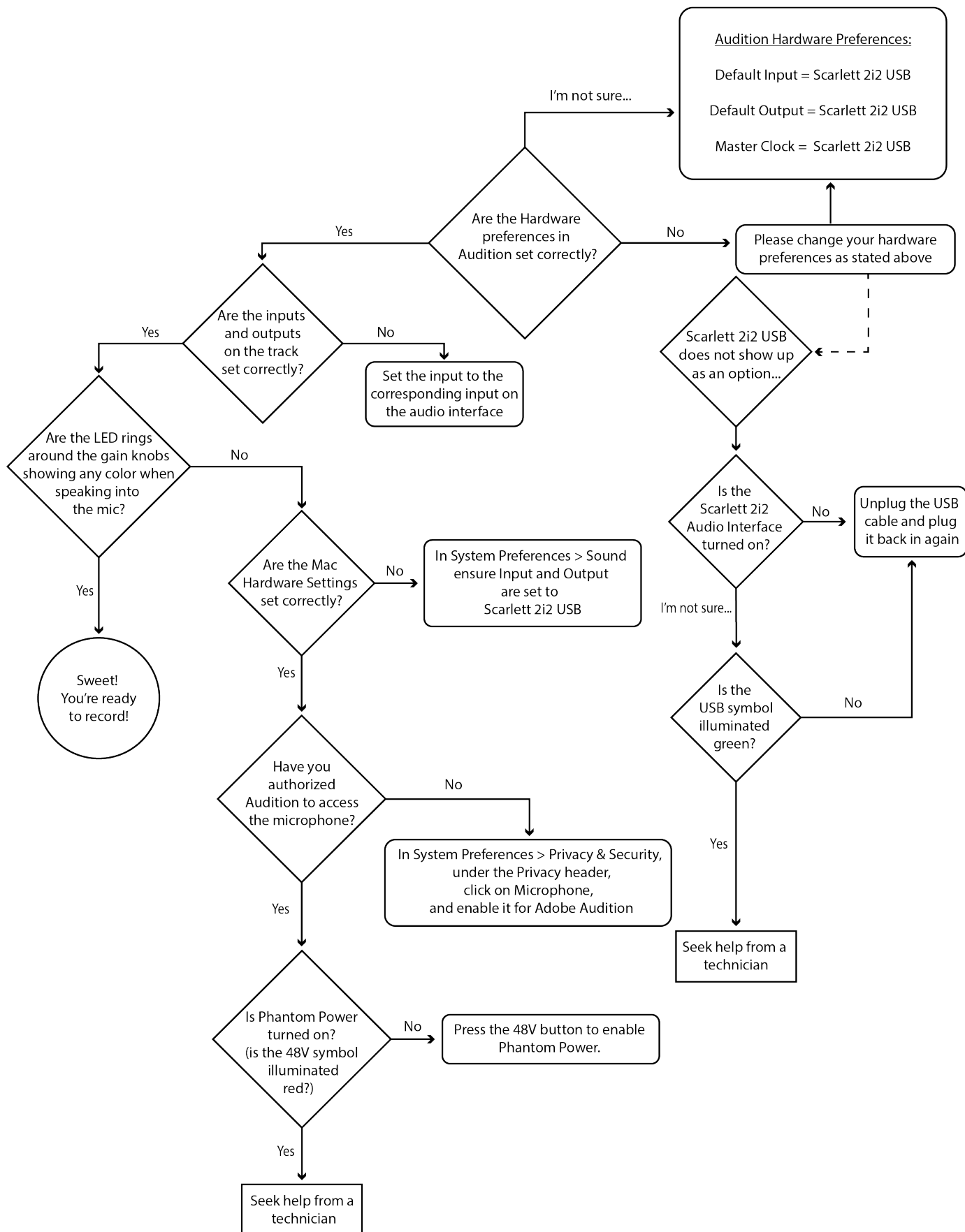
Shared Email Address for All Techs: [MAHTechServ@sussex.ac.uk](mailto:MAHTechServ@sussex.ac.uk)

Technical Website URL: <https://www.sussex.ac.uk/schools/media-arts-humanities/internal/students/technicalservices>

YouTube Channel URL: [www.youtube.com/channel/MAHTechServ](http://www.youtube.com/channel/MAHTechServ)

# GETTING STARTED IN THE VOCAL BOOTH USING ADOBE AUDITION

## TROUBLESHOOTING: GETTING SOUND INTO AUDITION





# OVERVIEW OF THE FOCUSRITE SCARLETT 2i2 AUDIO INTERFACE

The blue square contains the socket and controls for Input 1. The pink square contains the socket and controls for Input 2. The controls are the same in both.

