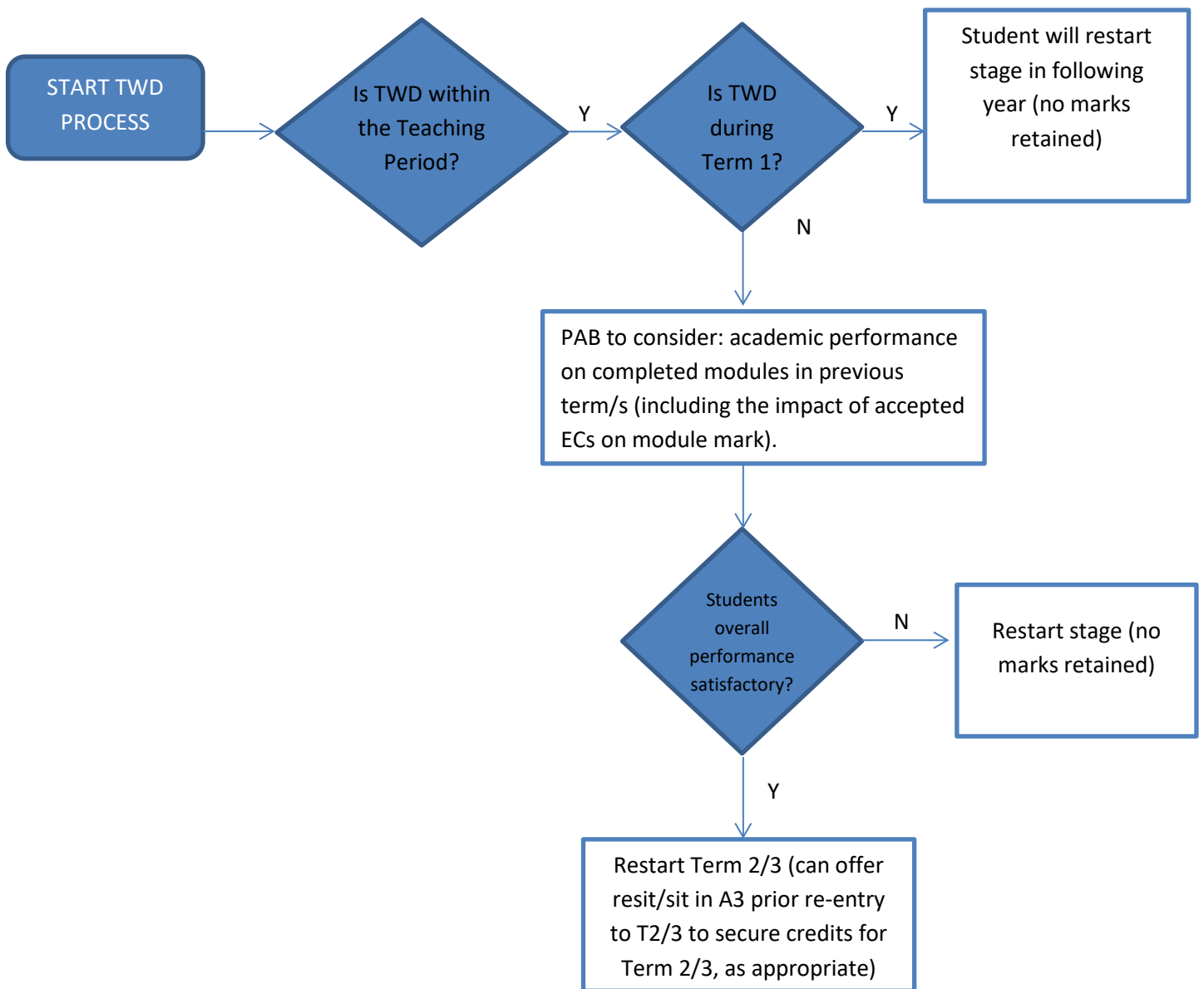


Temporary Withdrawal (TWD)



Note:

1. The PAB makes an academic judgement based on academic performance and credits achieved to date;
2. PAB may decide that student does not need to restart the term where they have completed most of the teaching but not achieved all the credit for the term (resit/sit can be set in A3);
3. Assessments set in A3 prior to re-entry will be:
 - uncapped for: missed assessments scheduled after TWD date; assessments failed/impaired where PAB offers a Sit as a result of accepted Exceptional Circumstances (EC).
 - capped for: missed/failed assessments scheduled before TWD date (to ensure equity for all students including those with accepted exceptional circumstances).
4. PAB may decide to offer a repeat stage/term despite credits being achieved..